



DISTRICT EXPORT ACTION PLAN

DISTRICT – BEMETARA

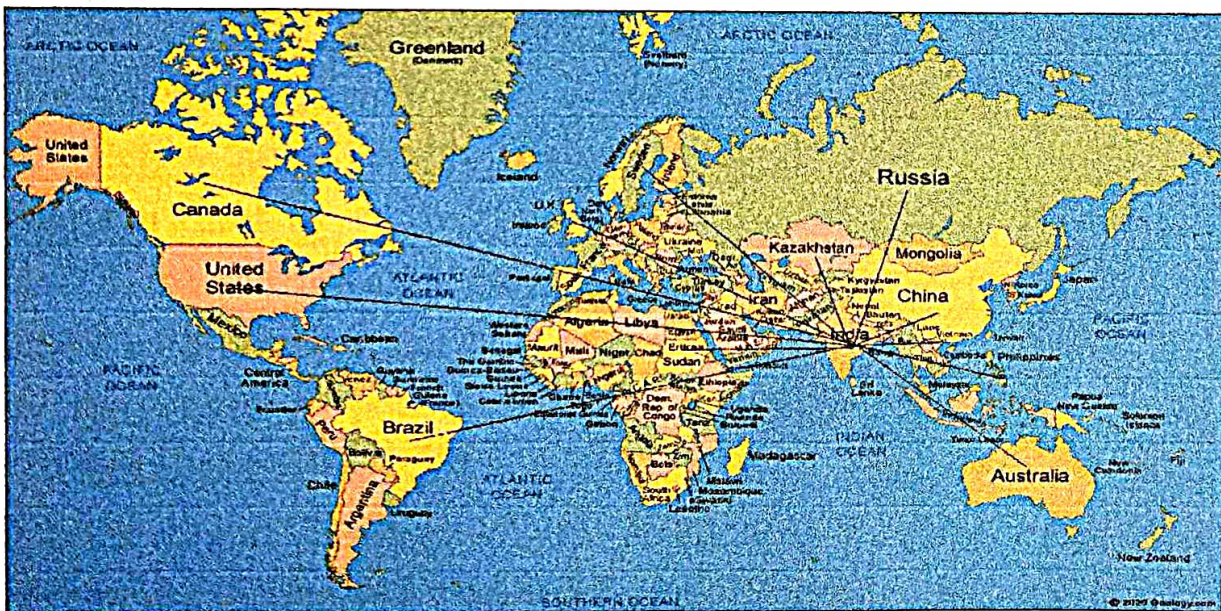
CONTENT

- INTRODUCTION
- DISTRICT PROFILE
- INDUSTRIES PROFILE
- EXPORT SCENARIO
- SERVICE PROFILE
- DISTRICT INFRASTRUCTURE
- EXPORT OPPORTUNITY
- STATE GOVERNMENT INCENTIVES

INTRODUCTION

District Export Hub Initiative:

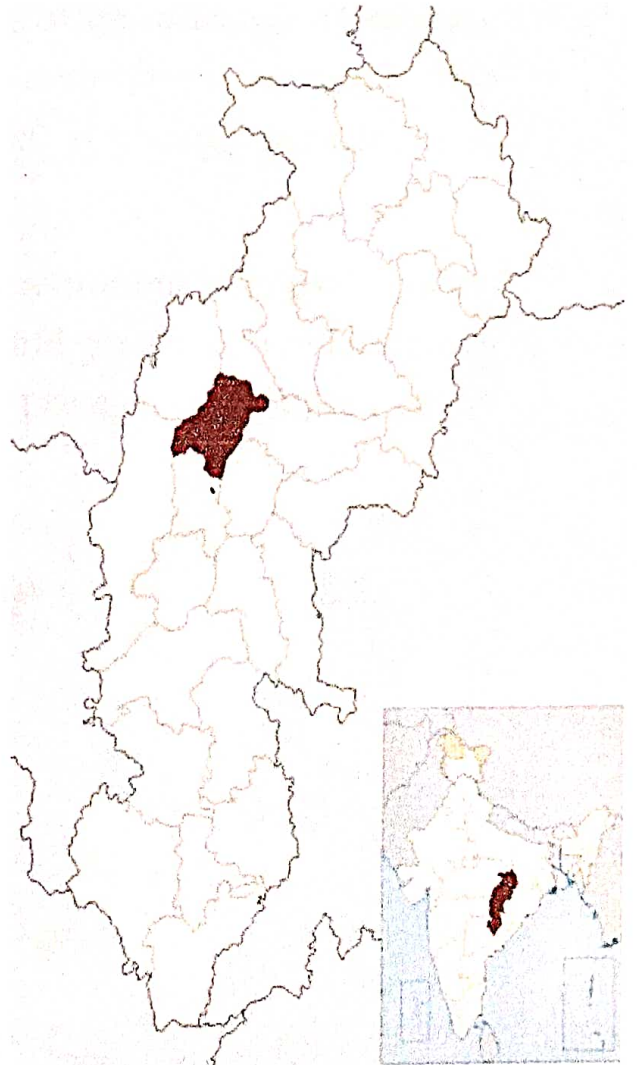
In light of the Hon'ble PM's Independence Speech, various instructions regarding developing Districts as Export Hubs were issued. These initiatives aims at building institutional mechanism to understand the issues of Industries at ground level in Districts, identify their comparative strength and work continuously in time-based manner to realize the vision of developing District as Export Hub. In follow up of this, District Export Action plan has been prepared.



DISTRICT PROFILE

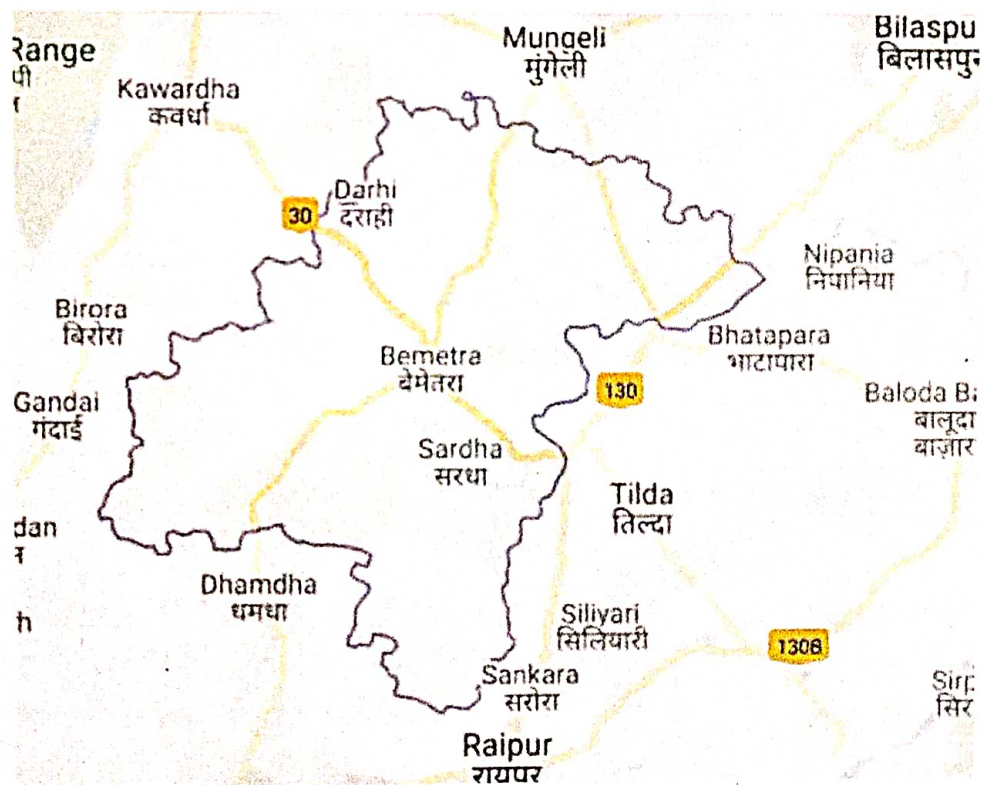
Bemetara district is a newly constituted district of Chhattisgarh state, which was formed on January 1st, 2012 after partition of the Durg district. It is located on the northern side of Durg district. Total area of the district is 2854.81 sq. km. and the total population of the district is approximately 795759. The district is surrounded by 7 districts of Chhattisgarh state ie Durg, Raipur, Baloda Bazar, Bilaspur, Kawardha and Rajnandgaon.

Bemetara city is well connected to Raipur, Jabalpur, Bilaspur and Durg by roadways. NH-30 passes through the heart of city which is one of the busiest road in the state. Airport Facility is available from the Swami Vivekananda Airport, Raipur which is 90 Kms from Bemetara and the nearest Railway station is Tilda(35 km) and other major station are Raipur (66 km) and Durg (72 km).



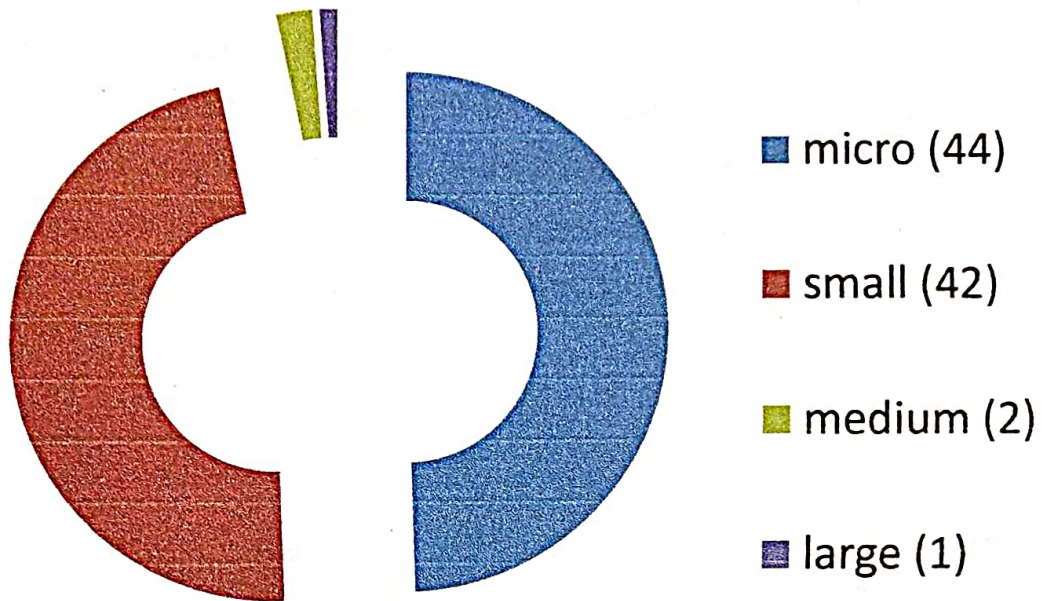
One of the major river of Chhattisgarh “Shivnath” and its tributaries Hanf, Surhi and Sakri passes through Bemetara. Bemetara is well known for its agricultural produce like sugarcane, rice, gram, tomato, cotton, soybean, turmeric and other spices.

Bemetara has been attracting investment proposals owing to its geographical location, agricultural produce, availability of land and skilled labor at competitive price, uninterrupted power supply and transparent administration.

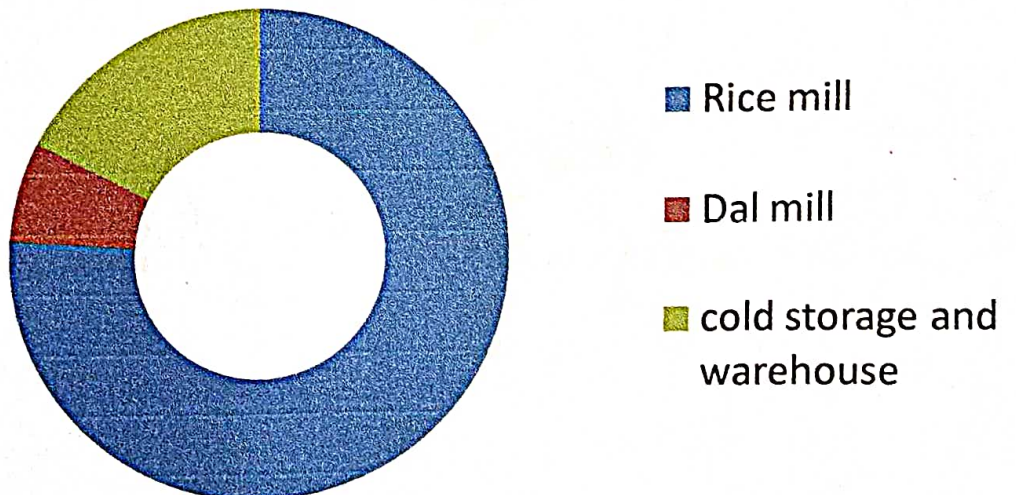


INDUSTRIES PROFILE

total registered industries in bemetara- 89

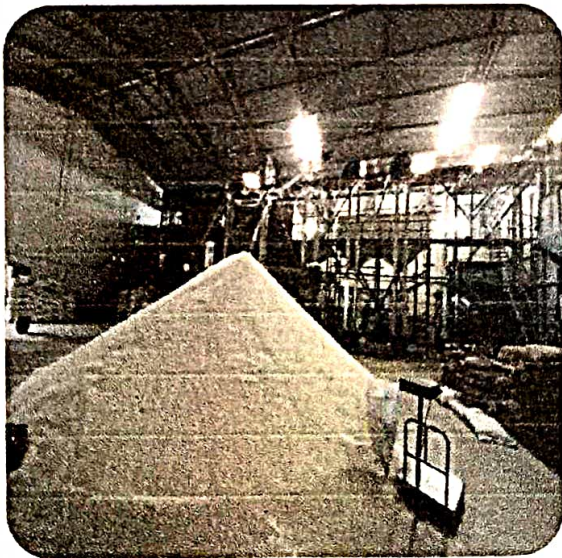


main industries



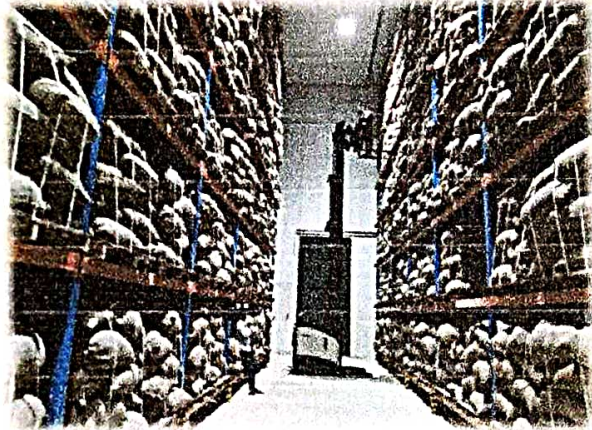
EXPORT SCENARIO

Bemetara district is known for its rice and its export to neighbouring countries. Rice is India's one of the traditional export commodity. District has paddy field area of approx 188500 hac, which produces approx 455616 MT of paddy. There are 55 rice mills in district with capacity of 273600 MT. Few rice millers export rice through export house, they should be facilitated to obtain IEC registration for direct export of their product.



SERVICE PROFILE

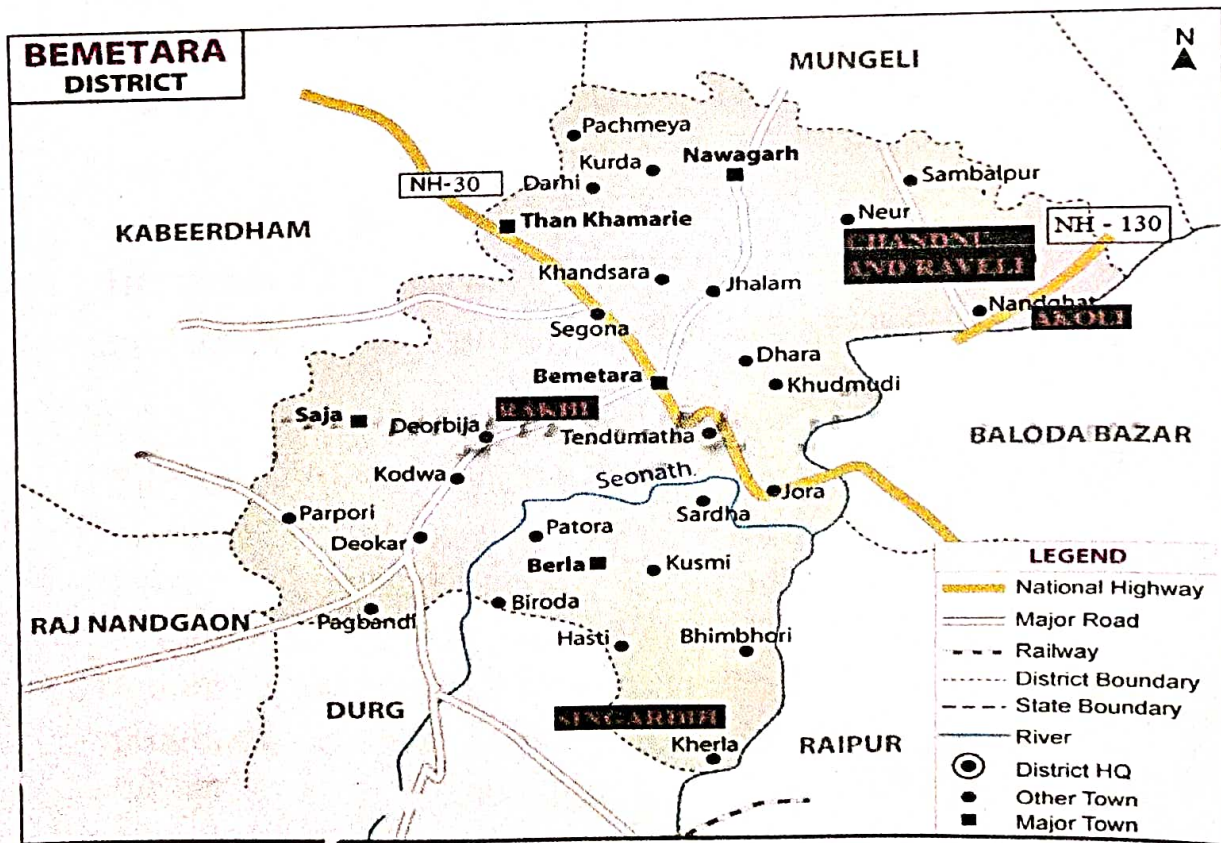
Presently 3 cold storages with capacity of 15600 MT and 5 warehouses with capacity of 12250 MT are facilitated and promoted by Industry Department. In addition to that 6 Cold storages and Warehouses are under construction.



DISTRICT INFRASTRUCTURE

Four Food Park / Industrial Area has been proposed in each block of the district. Department has total of 118.41 hac. land to allot for food processing and other industries.

BLOCK	INDUSTRIAL AREA	AREA (HEC.)
BEMETARA	CHANDNU AND RAVELI	82.76
BERLA	SINGARDIH	16
SAJA	RAKHI	7.65
NAWAGARH	AKOLI	12



EXPORT OPPORTUNITIES

SPICES :-

India has always been known for its quality of spices that it has exported to the world. The aroma, taste, quality, texture and medicinal value makes spices as one of the most sought after spices in the world. Presently, India is the largest producer and exporter of spices in the world. Most of these spices are produced in small land plots owned by farmers. District profile in cultivation of such spices are follows-

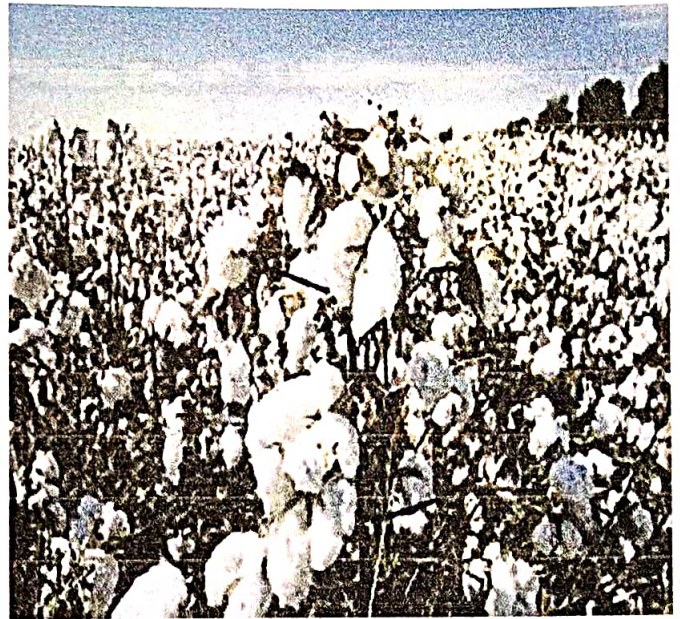
- Chilli- India exported the maximum quantity of Chilli in the spice category. The major importer of Indian Chilli are Vietnam, Thailand, Malaysia, Sri Lanka, and USA. The growth in export has been incremental in previous years. In Bemetara Chilli (green) is cultivated in 1053 hac which produces 8424 MT of chilli.



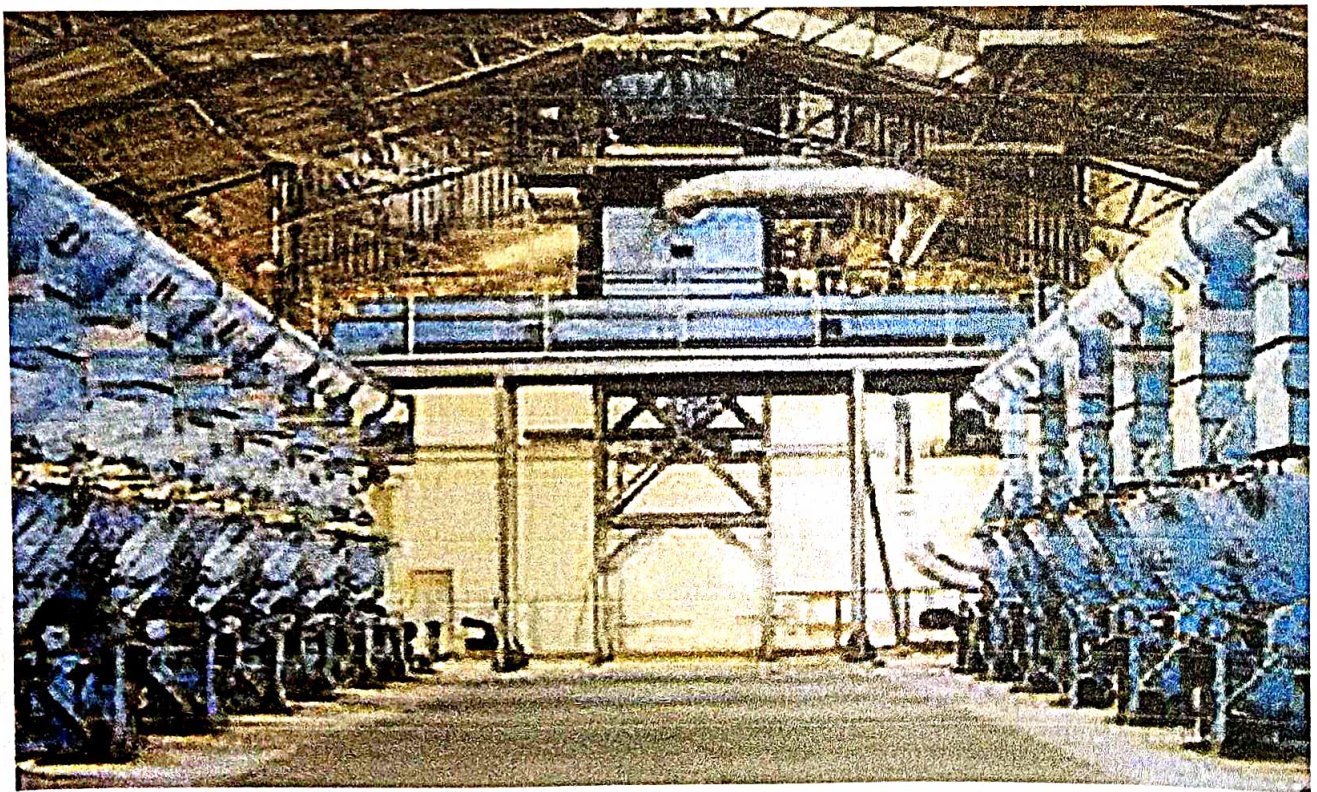
- Turmeric- India leads the way in turmeric export in the world. Iran, USA, Bangladesh, UAE and Malaysia are the leading importers of Indian turmeric. District has produced around 8000 MT of turmeric



COTTON :- Cotton is a traditional Indian export product. The Indian cotton textile industry stands out in the world due to factors such as abundant availability, competitive production costs, vertically integrated production facilities, diverse product range, flexibility in volume. Presently 2 cotton ginning plants are establishing in district.



Pic- cotton ginning plant



REGIONAL HANDICRAFT:- District has a large number of artisans who make decorative items by hand or using hand-held tools. These are high in demand but lack the exposure to the global market. With the platform provided by e-commerce websites like Amazon and Flipkart, one can get these products listed to be seen and bought by customers overseas. Regional handicrafts are designed and made by local experts at very low costs. Exporting such items have huge margin of profits as they are in huge demand in foreign countries. The advantage of exporting such products is that it doesn't requires huge investment but only a very small investment and some good network with local artisans.

SUGAR :- India majorly exports sugar to Bangladesh, Sri Lanka, Afghanistan, Somalia and Iran. The sugar mills in the neighbor district is well supported by the government. District has sugarcane field of 2310 hac., which shows opportunity of sugar mill in district. India exported approx 3988 thousand tons of sugar in FY19-20.



STATE GOVERNMENT INCENTIVES

TRANSPORT GRANT: - During industrial policy 2019-24 unit established anywhere in the state manufacturing products (export based industries excluding mining material) to be exported from manufacturing place to exporting place, the actual freight/charge occurred will be compensated by equivalent assistance. The assistance would be limited to 20 lakh per year maximum for 5 years.



कार्यालय महाप्रबंधक
जिला व्यापार एवं उद्योग केन्द्र, जिला-बेमेतरा (छ0ग0)

E-mail Id- dtic-bemetara.cg@gov.in

क्रमांक/जि.व्या.उ.के./एमएसएमई./2020-21/

बेमेतरा, दिनांक

—:जिला निर्यात संवर्धन समिति की बैठक सूचना:—

बेमेतरा जिले में निर्यात को बढ़ावा देने तथा निर्यात संबंधी गतिविधियों के बेहतर क्रियान्वयन हेतु DISTRICT EXPORT ACTION PLAN तैयार किया गया है, जिस पर चर्चा/अनुमोदन हेतु जिला निर्यात संवर्धन समिति की वर्चुअल बैठक दिनांक 08.02.2021 को दोपहर 12:00 बजे आयोजित की गई है। प्रस्तावित प्लॉन की प्रति संलग्न प्रेषित है। उपरोक्त बैठक हेतु लिंक शीघ्र ही प्रेषित किया जायेगा।

(कलेक्टर महोदय द्वारा आदेशित)

महाप्रबंधक
General Manager
जिला व्यापार एवं उद्योग केन्द्र,
Dist. Trade & Industries Center
Bemetara (C.G.)

पृ. क्रमांक/जि.व्या.उ.के./एमएसएमई./2020-21/1676
प्रतिलिपि:-

बेमेतरा, दिनांक 01/02/2021

1. संचालक उद्योग, उद्योग संचालनालय, उद्योग भवन, रायपुर।
 2. संयुक्त महानिदेशक (सहअध्यक्ष), भारत सरकार, वाणिज्य एवं उद्योग मंत्रालय, संयुक्त महानिदेशक, विदेश व्यापार का कार्यालय, पहली मंजिल नया प्रशासनिक भवन, वीसीए ग्राउन्ड के सामने, सिविल लाईन, नागपुर-440001।
 3. कलेक्टर, जिला-बेमेतरा।
 4. निदेशक, सूक्ष्म लघु एवं मध्यम उद्यम संस्थान, भनपुरी, रायपुर।
 5. अग्रणी बैंक प्रबंधक, भारतीय स्टेट बैंक, बेमेतरा।
 6. डीन, कृषि महाविद्यालय, बेमेतरा।
 7. जिला प्रबंधक, नाबार्ड, बेमेतरा।
 8. उपसंचालक, कृषि विभाग, बेमेतरा।
 9. सहायक संचालक, उद्यानिकी विभाग, बेमेतरा।
 10. अध्यक्ष चावल उद्योग संघ, बेमेतरा।
- कृपया उपरोक्त बैठक में उपस्थिति हेतु सादर अनुरोध है।

महाप्रबंधक
General Manager
जिला व्यापार एवं उद्योग केन्द्र,
Dist. Trade & Industries Center
Bemetara (C.G.)