

कार्यालय महाप्रबंधक
जिला व्यापार एवं उद्योग केन्द्र, कबीरधाम (छ.ग.)

दूरभाष-07741-233174, Email ID - dtlc-kabirdham.cg@gov.in

कमोंक / जि.व्या.उ.के.-कबी. / निर्यात / 2026 / 292
प्रति,

कबीरधाम, दिनांक 13/03/2026

✓ संचालक उद्योग
(निर्यात प्रकोष्ठ)
उद्योग संचालनालय, छत्तीसगढ़
उद्योग भवन, रिंग रोड नंबर-01
तेलीबांधा, रायपुर

विषय :- जिला निर्यात कार्ययोजना (District Export Action Plan) के अनुमोदन के संबंध में।

संदर्भ :- उद्योग संचालनालय, छत्तीसगढ़ का स्मरण पत्र क्रमांक- GENS-11/2178/2025-DOI रायपुर दिनांक 25.02.2026

उपरोक्त विषयांतर्गत संदर्भित पत्र के माध्यम से जिला निर्यात संवर्धन समिति से जिला निर्यात कार्ययोजना का अनुमोदन कराकर, अनुमोदित प्रति संचालनालय को उपलब्ध कराने हेतु निर्देश प्राप्त है। संदर्भित पत्र के परिपालन में जिला निर्यात संवर्धन समिति की बैठक दिनांक 10.03.2026 को आयोजित किया गया, जिसमें जिला निर्यात संवर्धन समिति द्वारा जिले हेतु तैयार की गयी District Export Action Plan का अनुमोदन किया गया है। जिला निर्यात संवर्धन समिति की बैठक दिनांक 10.03.2026 का कार्यवाही विवरण एवं District Export Action Plan की अनुमोदन प्रति पत्र के साथ सादर संलग्न प्रेषित है।

संलग्न :- उपरोक्तानुसार।

महाप्रबंधक
जिला व्यापार एवं उद्योग केन्द्र
कबीरधाम (छ.ग.)

कार्यालय महाप्रबंधक,
जिला व्यापार एवं उद्योग केन्द्र कबीरधाम (छ.ग.)


दूरभाष 07741-233174, ईमेल- dtic-kabirdham.cg@gov.in

जिला निर्यात संवर्धन समिति की बैठक दिनांक 10.03.2026 का कार्यवाही विवरण


कलेक्टर महोदय की अध्यक्षता में गठित जिला निर्यात संवर्धन समिति की बैठक दिनांक 10.03.2026 को कलेक्टर कार्यालय सभागार में आयोजित की गई। बैठक में निम्नांकित अधिकारी/सदस्य उपस्थित हुए :-

1. कलेक्टर, जिला कबीरधाम
2. वनमंडलाधिकारी जिला कबीरधाम प्रतिनिधि
3. अपर कलेक्टर, जिला-कबीरधाम
4. उपसंचालक संचालक कृषि
5. सहायक संचालक, उद्यानिकी
6. जिला अग्रणी बैंक प्रबंधक
7. महाप्रबंधक, जिला व्यापार एवं उद्योग केंद्र कबीरधाम

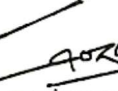
सर्वप्रथम महाप्रबंधक एवं सदस्य, जिला निर्यात एवं संवर्धन समिति द्वारा उपस्थित माननीय सदस्यों को बैठक के एजेण्डा से अवगत कराते हुए जिले हेतु तैयार की गयी District Export Action Plan का अनुमोदन जिला निर्यात एवं संवर्धन समिति से कराया जाकर उद्योग संचालनालय रायपुर प्रेषित किये जाने हेतु प्राप्त निर्देश के संबंध में जानकारी प्रदान किया गया। उक्त संबंध में जिले हेतु तैयार की गयी District Export Action Plan पर प्रकाश डालते हुए जिले में निर्मित औद्योगिक उत्पाद यथा-गुड़, इथेनाल, राईस परबायल्ड, कृषि उत्पाद यथा-तेदूपत्ता, लाख, उद्यानिकी उत्पाद यथा-आम, केला, पपीता आदि के निर्यात हेतु जिले में संभावनाएँ तथा उत्पादों के संरक्षण/भंडारण हेतु कोल्ड स्टोरेज एवं वेयरहाउस की स्थापना, औद्योगिक निवेश प्रोत्साहन हेतु औद्योगिक नीति 2024-30 के तहत प्रदान की जाने वाली अनुदान/छूट/रियायते के संबंध में विस्तृत जानकारी प्रदान किया गया। इसके साथ ही जिले में पूर्व में आयोजित की गयी निर्यात कार्यशाला, ग्रीन पैकेजिंग हेतु कार्यशाला, बैंकर्स इन्वेस्टर मीट की जानकारी से अवगत कराया गया। कलेक्टर/अध्यक्ष महोदय द्वारा जिले में स्थापित कोल्ड स्टोरेज एवं वेयरहाउस की जानकारी मांगी गयी। उक्त संबंध में महाप्रबंधक जिला व्यापार एवं उद्योग केंद्र द्वारा जिले में स्थापित/पंजीकृत उद्योग की जानकारी प्रदान की गयी। चर्चा उपरांत जिले हेतु तैयार की गयी District Export Action Plan का अनुमोदन जिला निर्यात संवर्धन समिति द्वारा किया गया।



महाप्रबंधक
जिला व्यापार
एवं उद्योग केंद्र
कबीरधाम
सदस्य


D/Niryat 2021


सहायक
संचालक
उद्यानिकी
सदस्य


जिला अग्रणी
बैंक प्रबंधक
सदस्य


उपसंचालक
कृषि
सदस्य

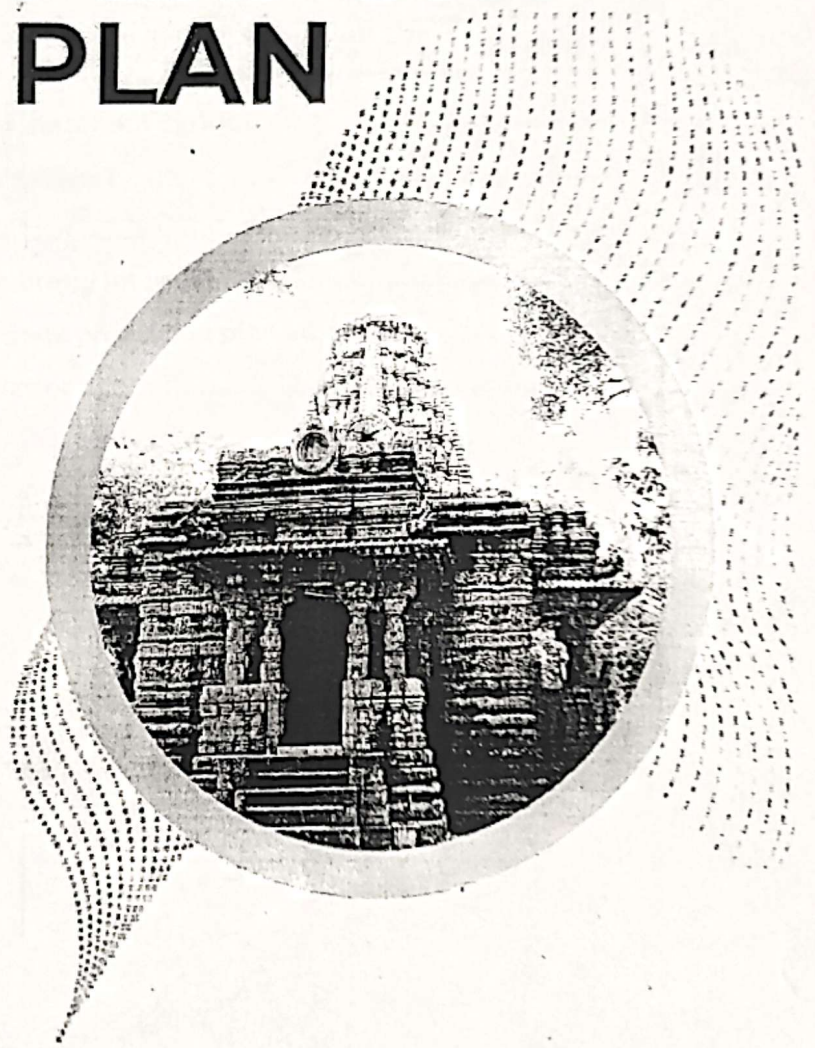

अपर
कलेक्टर
जिला
कबीरधाम


वनमंडलाधिकारी
कबीरधाम/
प्रतिनिधि
सदस्य


कलेक्टर
जिला
कबीरधाम
अध्यक्ष



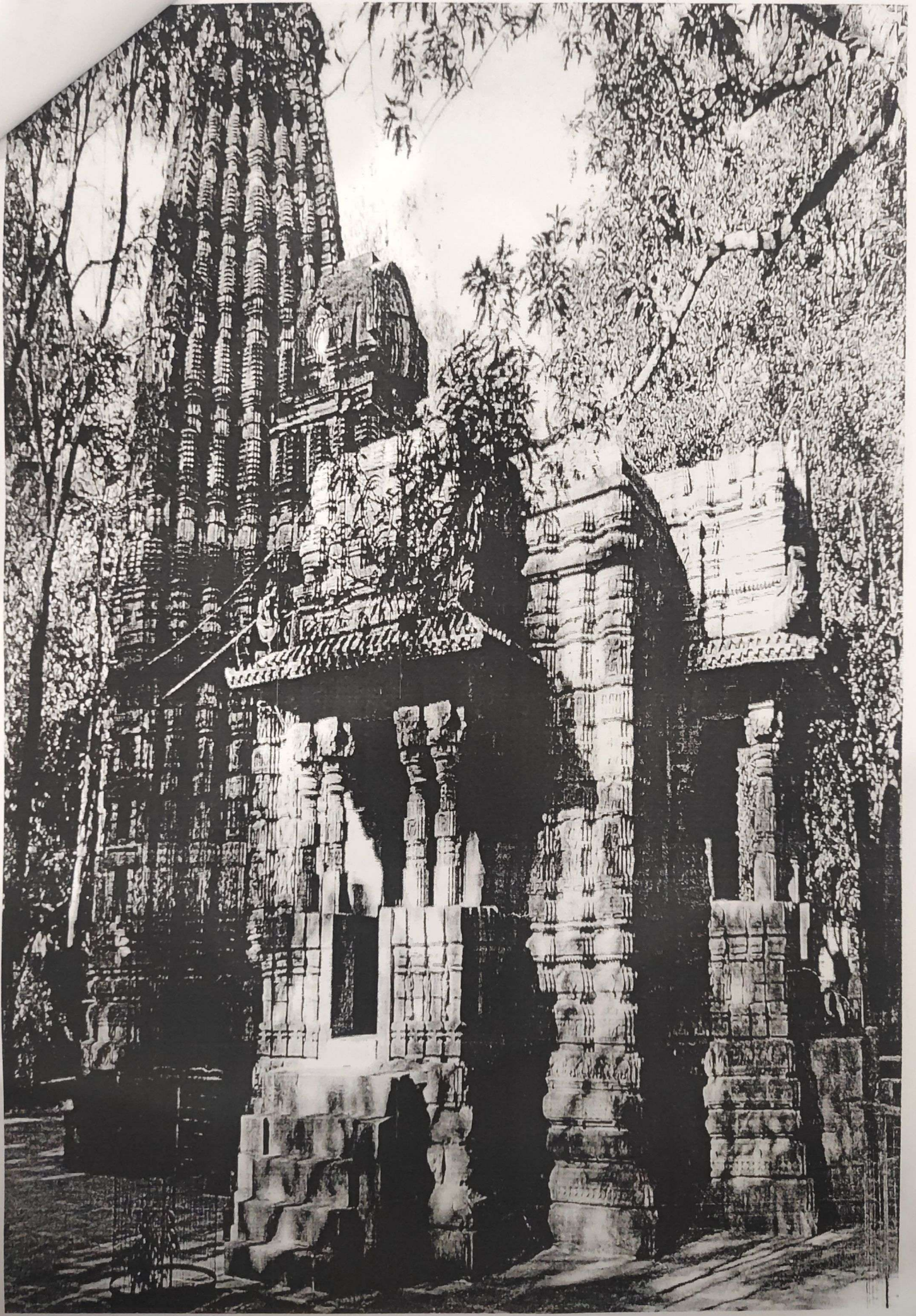
DISTRICT EXPORT ACTION PLAN



KABIRDHAM

Contents

1. District Profile	4
1.1 Introduction.....	4
1.2 Administrative Profile	5
1.3 Location and Geography	6
2. Demographic Profile	7
3. Logistics Infrastructure Profile	8
4. Economic and Sectoral Overview	8
5. Industrial Insight	11
6. Kabirdham – Export.....	11
6.1 High Potential products for Kabirdham district	12
6.3 Strategy to improve district’s export	14
7. District SWOT Analysis	15
7.5 District level policy and regulatory intervention:.....	16
7.6 Regional and international trade promotion plan	17
8. Challenges and Recommendation	17



centuries. Its architectural style bears a striking resemblance to the famous Khajuraho temples, earning it the nickname "Khajuraho of Chhattisgarh."

1.2 Administrative Profile

Situated within the Durg division of Chhattisgarh, this district functions as a key administrative unit of the state. The overall governance and management of the district are overseen by the District Collector, who also serves as the Magistrate.

The Additional Collector runs the Revenue administration under various enactments in the district. He is also designated as Additional District Magistrate. He mainly deals with civil supplies, land matters, mines and minerals, village officers etc. Departments and district offices under collectorate Kabirdham are-

1. Zila panchayat Kabirdham
2. Food and Drugs Administration
3. Revenue Department
4. National informatics center (NIC)
5. Treasury Office
6. Department of Tribal and Schedule Caste
7. Election Office
8. Excise Department
9. Census and Statistical Department
10. Labour department etc.

Administrative Structure of Kabirdham¹

- **District Headquarter:** Kawardha
- **Constituencies:**
 - **Assembly**
 - i. Pandariya
 - ii. Kawardha
 - **Parliamentary**
 - i. Rajnandgaon
- **Tehsils (08):** Kawardha, Pipariya, Sahaspur Lohara, Pandariya, Bodla, Rengakhar Kala, Kunda, Kukdur
- **Development Blocks (4):** Kawardha, Sahaspur Lohara, Pandariya, Bodla
- **Urban Local Bodies (05)**

¹ Information accessed from <https://kawardha.gov.in/en/> on 25-07-2025

Note: The map shown is used for illustrative purpose only.

- Municipality Kawardha
- Nagar Panchayat Pipariya
- Nagar Panchayat Sahaspur Lohara
- Nagar Panchayat Bodla
- Nagar Panchayat Pandaria
- Nagar Panchayat Pandatari

- **Rural Governance:**

- Gram Panchayat: 468
- Villages: 1006

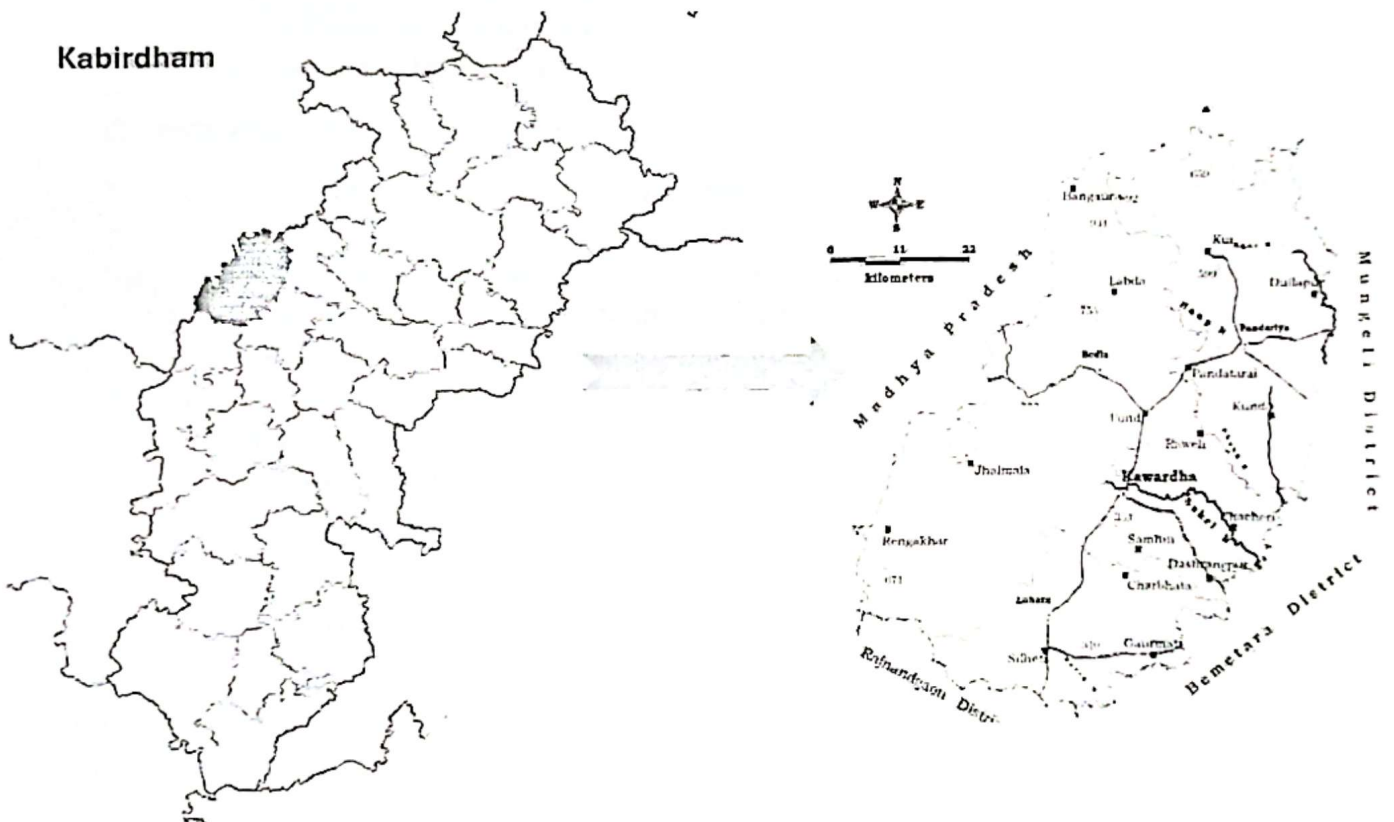


Image1: Kabirdham map

1.3 Location and Geography²

Situated in the east-central region of Chhattisgarh, Kabirdham is rich with dense forest and green flora. Northern region of the district has a long series of hills and mountains, sometimes running parallel to each other or cross-crossing somewhere. Lush green terrain and valleys present elegant natural beauty.

² Source: <https://kawardha.gov.in/en/> accessed on 30-07-2025

- **Average altitude:** 1200 meters above sea-level
- **Coordinates:** Between 21° 32' - 22° 35' North and 80° 48' - 81° 48' East longitude
- **Total Area:** Approx 6205 square Km.

Geographical Boundaries

District Kabirdham shares its boundaries with Dindori (Madhya Pradesh) in north, Bilaspur and Durg in east, Rajnandgaon in South, and District Balaghat in west. The northern and western parts are surrounded by Maikal mountain ranges of Satpura. Here the highest peak is Kesmarda in Maikal mountain, which is 925 meter high, while the minimum height is 320 meters. The central east and southern part of the district is plain, whereas the northern and western part is mountainous. The district has its own benefit of **Interstate Trade** since it shares boundaries with Madhya Pradesh which opens opportunity for local products to engage in cross border trade benefiting from different regional demands and resources.

Climate and Land

The climate of District Kabirdham is moderate, where the maximum temperature in summer is 42°C and the minimum temperature in winter goes to the lowest of 15°C only. Mainly Black, Kanhar and Dorsa soil is found in the district, in which Nitrogen, Alp Potash and Sulphur is available in medium quantity, whereas Zinc and Sulphur elements lack. The main rivers of the district originate generally from Maikal mountain range. Haf, Phok and Sakri rivers after emerging from north-west of the district flow towards southeast and in the end after going in District Durg fall in river Shivnath, whereas Phen, Halon, Banjar and Jamunia rivers flowing towards west fall in river Narmada. There is no all-weather rivulet except Saliha Nala in the district.

2. Demographic Profile³

Kabirdham district, has a population of 822,526 as per the census 2011. The district is predominantly rural, with 89.37% of the population residing in rural areas. The major languages spoken are Hindi and Chhattisgarhi.

Table 1: District Demography

S. No	Indicators	Metrics
Population Statistics (Census 2011)		
1	Total Population	8,22,526
	Males	412,058
	Females	410,468
2	Urban Population	87,395

³ Information accessed from <https://kawardha.gov.in> and <https://www.census2011.co.in/census/district/492-kabirdham.html> on 07-07-2025

3	Rural Population	735,131
4	Population Density	194 persons per km
5	Population Growth Rate (2001–2011)	40.71%
6	Population (0-6 age group)	141,904
Sex Ration		
7	Overall	996 females per 1,000 males
Literacy Rate		
8	Overall	60.85%
9	Male Literacy	72.98%
10	Female Literacy	48.71%

3. Logistics Infrastructure Profile⁴

Kabeerdham district HQ. is connected with State capital (Raipur) by National Highway no. 200 upto Simga and by NH 12A from Simga to district HQ. Kawardha. The National Highway 12A connects the district to Mandla, Jabalpur etc. in adjoining Madhya Pradesh. Road transport is the main means of transport. District head-quarter is well connected by roads to its all four tahsils. It is also connected by road from Durg, Rajnandgaon, Mandla, Balaghat, Bemetara, Simga etc. Kabidham district has no rail connectivity. The nearby railway stations from the district headquarters are Bilaspur, Raipur and Durg junction which are located at the distance of 113 km, 120 and 126 respectively. . The nearest airport is Swami Vivekananda Airport, Raipur.

The district also has a network of 571 kms. of district road, 143 kms. of agriculture board road and 660 kms. of kaccha roads.

4. Economic and Sectoral Overview⁵

The economy of Kabirdham district is primarily based on agriculture, which serves as the main livelihood for the majority of its population. Although small-scale industries such as rice milling, handloom weaving, and bamboo crafts play a crucial role, the district is also focusing on growing its tourism industry, encashing its abundant cultural heritage and natural beauty.

⁴ Source: <https://dcmsme.gov.in/dips/Kabirdham.pdf>

⁵ Source: <https://kawardha.gov.in/en/document/district-census-handbook/> (2011)

Agriculture

Agriculture is the primary source of livelihood for Kabirdham district. The district's farming largely depends on rivers, canals and rainfall, supplemented by horticulture and animal husbandry. The district receives an average annual rainfall of around 1,200 mm, supporting the cultivation of both Kharif and Rabi crops. Canals and borewells are main source of irrigation in the district. There are 39 government and private canals in the district by which 18,156 hectares of land is irrigated. Out of these, 31 canals are in Kawardha tahsil and 7 canals are in Pandariya tahsil. There are 1,861 bore-wells, by which 7,042 hectares of land is irrigated. By tanks 1,886 hectares of land is irrigated. Apart from canals, borewells and tanks, other sources also irrigate 3,313 hectares of land. Major crops grown include paddy (rice), wheat, maize, sugarcane, pulses like gram and arhar, and oilseeds such as mustard. Kabirdham is especially known for its high sugarcane production, covering over 20,000 hectares, which supports several sugar mills and jaggery units in the region. In addition to traditional farming, farmers in the district are increasingly adopting horticulture crops like papaya and banana, which offer higher returns. Agricultural development in Kabirdham is supported by a network of cooperative societies, paddy procurement centres, and government schemes aimed at improving irrigation, seed quality, and farm income.

Table 2: District Agriculture area and production 2023-24 (area '000 Ha, Production '000 MT)⁶

S. No	Crop	Area (000 Ha)	Production (000 MT)
A. Fruits			
1.	Gooseberry	0.737	9.522
2.	Banana	0.984	18.066
3.	Custard Apple	0.896	11.594
4.	Guava	1.082	15.734
5.	Jackfruit	0.346	4.706
6.	Limes and Lemons	0.903	6.773
7.	Mango	3.141	18.155
8.	Papaya	0.354	4.269
9.	Pomegranate	0.032	0.000
10.	Other Citrus	0.669	7.633
Total		9.144	96.461
B. Vegetables			
11.	Other Citrus	0.669	7.633
12.	Arbi/ Colacasia	0.652	13.040
13.	Beans	0.640	9.120
14.	Bitter Gourd	0.365	5.475
15.	Bottle Gourd	0.340	6.800
16.	Brinjal	1.573	31.460
17.	Cabbage	0.383	6.894
18.	Carrot	0.230	3.450

⁶ Source: <https://agriportal.cg.nic.in/horticulture/HortiEn/Default.aspx> accessed on 31 July 2025.

19.	Cauliflower	0.638	11.484
20.	Elephant Foot	0.290	5.220
21.	Green Chilly	2.539	25.390
22.	Kaddu/ Pumpkin	0.231	4.158
23.	Leafy Vegetables	0.365	3.650
24.	Okra/ Lady Finger	0.872	13.080
25.	Onion	1.368	20.520
26.	Peas (Green)	0.200	1.600
27.	Potato	0.343	6.860
28.	Radish	0.510	7.140
29.	Ridge/ Sponge Gourd	0.195	2.340
30.	Sweet Potato	0.170	2.890
31.	Tomato	1.532	27.576
32.	Other Vegetables	2.171	22.310
Total		15.607	230.457

Animal Husbandry⁷

As per the Livestock Statistics of the Department of Animal Husbandry, Chhattisgarh, the district has 247418 cattle, 68180 buffaloes, 52260 goat and 6248 pigs. Other livestock are 3570 sheeps, 977 horse & others and 48293 poultry. There are 4 veterinary hospitals, 20 veterinary dispensaries and 14 artificial insemination centres run by veterinary department. Fowl farming is being established as an additional source of income by Banks which give a subsidy of 50% and 75% to general and Scheduled Caste/Scheduled Tribes respectively.

Forest Produce⁸

The district has 163832 hectares of forest cover, out of which 71058 hectare is reserved forest while 92774 hectare is under protected forest area, consisting rich flora and fauna. This enables district in forest-based economic activities. The collection and trade of forest products provide important source of income to the local communities. Key forest products include tendu leaves, honey, various gums, saal timber among others. These products offer strong market potential and continue to play a vital role in the district's economy. The overall revenue from the district from forest produce was INR 19.67 Cr. (2016-17)⁹. Solid wood used for furnitures and buildings, firewood, tendu leaves, lac, adhesive, commercial and industrial bamboo, harra, sal seed, mahua flower etc. are the main forest produce of the district.

⁷ Source: Census District Handbook 2011 District Kabirdhar

⁸ https://www.enviscecb.org/orders/State_Envi_Plan/Kabirdham.pdf and www.cgmpfed.org

⁹ Source: <https://kawardha.gov.in/en/about-district/economy/>

5. Industrial Insight

Kabirdham district in Chhattisgarh has an emerging industrial profile rooted primarily in agriculture, particularly sugarcane cultivation, which spans over 20,000 hectares. The district houses two major cooperative sugar factories—Bhoramdev and Sardar Vallabhbhai Patel—and is home to the state's first ethanol plant with an 80 Kilo Liters Per Day (KLPD) capacity, reinforcing its agro-industrial base. Under the One District One Product (ODOP) scheme, sugarcane-based products have been selected as the district's flagship product, driving growth in jaggery (gur) production with over 200 local units. Small-scale industries also include rice milling, pulse processing, and traditional bamboo crafts. In addition to agriculture, the district holds significant mineral reserves such as iron ore, bauxite, and limestone. While still largely agrarian, Kabirdham is steadily evolving into a hub for agro-processing, ethanol production, and mineral extraction.

The district has a dedicated industrial area owned by Chhattisgarh State Industrial Development Corporation (CSIDC), developed in an area of 20 hectares in Harinchhapra. The total number of registered industrial units in the district are 364. Number of existing micro & small enterprises and artisan units in the district are listed below.¹⁰

Table 3: District's Industrial insight

NIC Code	Type of Industry	Number of Units	Investment (Lakh Rs.)	Employment (No)
20	Agro based	22	436.06	265
26	Ready-made garments & embroidery	81	8.52	90
27	Wood/wooden based furniture	40	4.16	74
29	Leather based	5	.51	5
32	Mineral based	6	110.50	122
33	Metal based (steel fabrication)	16	64.22	51
97	Repairing and servicing	115	11.17	147

6. Kabirdham - Export

The export basket of the district is primarily driven by various types of agricultural products. The district's rice varieties, along with pulses, and millets, are well-suited for domestic and international markets. Its expanding horticulture sector—producing high-value fruits like mangoes, bananas among others offer promising opportunities for fresh and processed exports. Additionally, Kabirdham's status as a major sugarcane producer, strengthens its position as a key supplier in regional supply chains. The rich forest ecosystem also contributes exportable products such as tendu leaves, lac, and

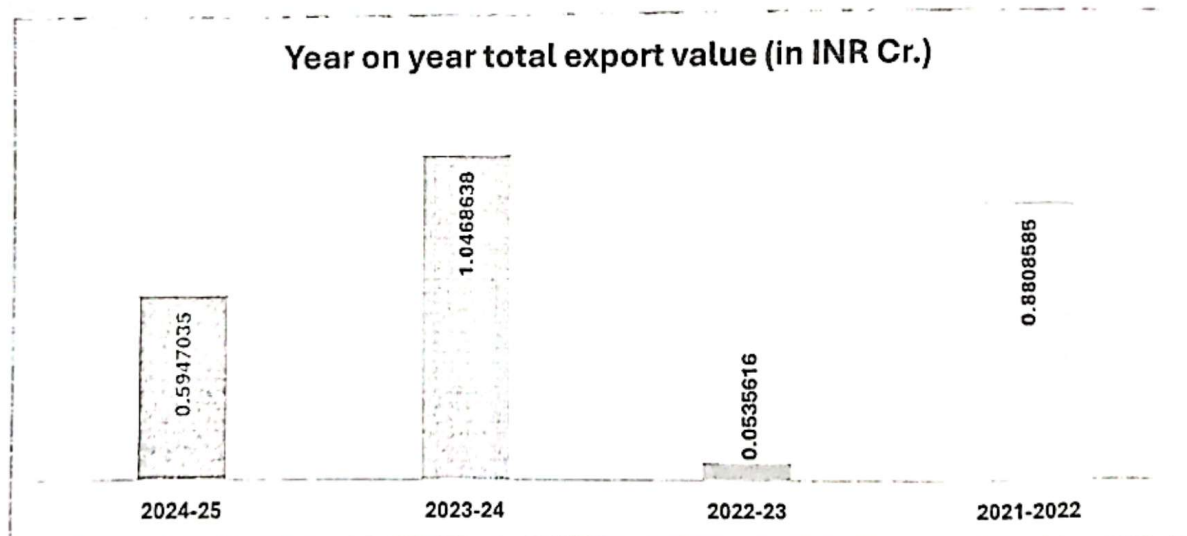
¹⁰ Source: <https://dcmsme.gov.in/dips/Kabirdham.pdf> report 2010-11

medicinal herbs. While export infrastructure is still developing, improvements in road connectivity and state-supported policies shall enable Kabirdham to tap into broader national and international markets.

Table 4: District's Export Scenario (2021-25, value in INR)¹¹

HS Code	Item Description	2024-25	2023-24	2022-23	2021-22
12030000	Copra	59,47,035	9752180	-	-
33074100	Agarbatti and others	-	467505	-	-
90262000	Instruments and Parts	-	147294	-	-
28042910	Helium	-	95363	-	-
84811000	Pressure Reducing Valves	-	6296	-	-
13039010	Molasses Edible	-	-	461578	-
30049099	Other Medicine Retail	-	-	68760	-
8439120	Parts for Centrifugal Pump	-	-	5278	-
10063010	Rice Parboiled	-	-	-	742511
34029091	Soap and other Washing	-	-	-	813293
62052090	Cotton Others	-	-	-	531586
52084230	Shirting Fabric	-	-	-	38595
Total		59,47,035	10468638	535616	2125985

Figure 1: Trend of export from Kabirdham



6.1 High Potential products for Kabirdham district

Kabirdham district holds significant potential to develop as an export hub primarily through its rich agricultural and agro-processing base. The district's flagship crop, sugarcane, underpins several value-added products such as sugar, jaggery (gur), and ethanol, all of which have strong demand in both domestic and international markets.

¹¹Source: <https://dashboard.commerce.gov.in/commercedashboard.aspx>

With the recent establishment of an ethanol plant and two cooperative sugar mills, these products can be produced at scale with improved quality standards suitable for export.

In addition to sugarcane products, Kabirdham's horticultural produce—especially mangoes, bananas, and papayas—show promise for export due to their increasing cultivation and growing market demand in neighbouring countries. The district's rice varieties also offer potential as part of India's expanding non-basmati rice exports.

Sectors like herbal and forest products, could add diversification to Kabirdham's export portfolio with proper development and support. To fully realize this potential, the district requires investment in post-harvest infrastructure such as cold storage, quality certification, packaging, and logistics to meet global export standards.

Table 5: Export potential products of Kabirdham

Product Category	Specific Products	Export Potential Highlights
Sugarcane-Based	Sugar, Jaggery (Gur), Ethanol	Kabirdham district's agro-based economy underpins its export potential, with sugarcane identified as the flagship crop among the highest in Chhattisgarh. This has led to the establishment of two cooperative sugar mills and the state's first ethanol plant with an 80 KLPD capacity, positioning sugar, jaggery (gur), and ethanol as viable export commodities due to their growing domestic and international demand, including emerging biofuel markets.
Horticulture	Mango, Banana, Papaya, Cauliflower, Cabbage	The district's horticultural sector, featuring mango, banana, papaya (notably the 'Red Lady Taiwan' variety), cauliflower, and cabbage, is expanding under farmer initiatives and government support. These fruits and vegetables have established demand in regional export destinations such as the Middle East and South Asia, supported by Chhattisgarh's broader efforts to boost horticultural exports.
Cereals & Pulses	Rice (non-basmati varieties)	Rice, particularly non-basmati varieties cultivated in Kabirdham, aligns with India's expanding rice export framework. The district's inclusion in export mapping initiatives and APEDA's programs underscores its potential contribution to the cereal export market.

Herbal & Forest Products	Medicinal herbs, Tendu leaves, Lac	The herbal and forest products have a very high demand for its purity and originality. Chhattisgarh has a history of exporting medicinal herbs, tendu leaves, and lac. With appropriate cultivation and processing, Kabirdham could leverage this sector for export diversification.
-------------------------------------	------------------------------------	--

These potential products' export readiness depends on continued investment in cold storage, processing and packaging infrastructure, quality certification, and skilled labour. Government schemes such as the One District One Product (ODOP) initiative and export promotion policies further enhance the district's capability to develop and market these products.

Enhancing value addition in agricultural products can significantly boost exports by transforming raw produce into higher-value, market-ready goods. Processing, grading, packaging, branding, and certification increase shelf life, ensure quality compliance, and meet international standards. Value-added products such as processed foods, organic items, ready-to-cook packs, and nutraceuticals command better prices in global markets compared to primary commodities. This shift reduces post-harvest losses and improves farmers' income through stronger linkages with agro-processing industries. Moreover, diversified product portfolios help exporters access premium segments and niche markets. By moving up the value chain, countries can enhance competitiveness, stabilize export earnings, and generate rural employment.

6.3 Strategy to improve district's export

1. Infrastructure Development

- **Cold Storage & Warehousing:** Establish modern cold storage units and warehouses near production hubs to reduce post-harvest losses, especially for perishables like mango, banana, and papaya.
- **Packaging Facilities:** Set up APEDA-compliant packing and processing centres to ensure quality standards, improve shelf life, and enhance product presentation for international markets.
- **Logistics & Transport:** Improve Road connectivity and reliable transportation to major trade centers, ports, and airports to ensure timely delivery and maintain product freshness.

2. Quality Control & Certification

- Encourage producers and processors to obtain internationally recognized certifications such as **HACCP**, **ISO**, and **Organic Certifications** among others, which are increasingly required by importers.
- Facilitate laboratory testing and quality audits locally to support compliance with phytosanitary and food safety standards.

3. Skill Development & Training

- Conduct training programs for farmers, processors, and exporters on best agricultural practices, post-harvest handling, packaging, and export procedures.
- Vocational training institutes can integrate export-oriented skills, including quality management, digital marketing, and foreign trade documentation.

4. Market Linkages & Export Promotion

- Collaborate with government bodies like **APEDA (Agricultural & Processed Food Products Export Development Authority)** and **state export promotion councils** for market intelligence and export facilitation.
- Participate in trade fairs, exhibitions, and buyer-seller meets to build contacts with international buyers.

5. Financial Support & Policy Incentives

- Leverage government schemes offering subsidies, credit facilities, and export incentives to MSMEs and farmer producer organizations.
- Promote cluster-based development to enable economies of scale and improve bargaining power.

6. Product Diversification & Value Addition

- Encourage processing of raw produce into higher-value products, e.g., organic jaggery, packaged dried fruits, fruit pulps, and ready-to-use herbal extracts.
- Invest in branding and geographical indication (GI) tagging where applicable, to create product differentiation in global markets.

7. Cluster development approach

- Cluster development approach promotes the geographic concentration of related industries, enabling shared infrastructure, skilled labour, technology access, and market linkages. It reduces costs, improves productivity, fosters innovation, and strengthens competitiveness of MSMEs, ultimately enhancing exports, employment generation, and balanced regional industrial growth.

8. District SWOT Analysis

Strengths

- Agricultural strength, especially sugarcane, rice, and horticulture crops (banana, mango, papaya)
- Presence of cooperative sugar mills and Chhattisgarh's first ethanol plant (80 KLPD)
- Rich in natural resources: iron ore, bauxite, limestone, and soapstone
- Inclusion in ODOP scheme for sugarcane and support for MSME development

Weaknesses

- Limited industrial base beyond agro-processing and sugar mills
- Lack of infrastructure such as cold storage, export-quality packaging, and logistics hubs
- Low level of urbanization and industrial diversification
- Skilled workforce shortage and limited access to higher technical education or advanced training

	<ul style="list-style-type: none"> • Weak market linkages for farmers and small-scale producers to reach national or international buyers
<p>Opportunities</p> <ul style="list-style-type: none"> • Expansion of agro-based industries like jaggery units, ethanol, and food processing • Potential to develop export-oriented clusters for sugar, jaggery, rice, and horticulture • Scope for infrastructure upgrades (cold chains, rural roads, warehouses) under government schemes • Vocational and skilling programs via ITIs to support local employment in MSMEs • Growth of organic farming and herbal product cultivation for domestic and export markets 	<p>Threats</p> <ul style="list-style-type: none"> • Climate variability and irregular rainfall affecting agriculture • Overdependence on sugarcane economy could be risky if demand or production drops • Outmigration of youth due to lack of job opportunities • Low private investment interest due to limited industrial ecosystem

7.5 District level policy and regulatory intervention:

To strengthen its export landscape, Kabirdham district requires focused policy and regulatory measures tailored to local needs. These efforts should tackle current challenges such as inadequate infrastructure, limited skilled manpower, and environmental concerns that restrict the expansion and competitiveness of local industries and MSMEs. Implementing simplified approval mechanisms, improving export support services, encouraging eco-friendly practices, and ensuring inclusive economic participation can help build a more dynamic and resilient industrial environment. Such strategic actions will not only enhance export capacity but also contribute meaningfully to broader state and national development objectives. Key recommended interventions include the following:

- i. Simplified Single-Window Clearance System
- ii. Customized Export Promotion Incentives
- iii. Land and Infrastructure Facilitation
- iv. Dedicated industrial zones and export parks with plug and play infrastructure
- v. Cluster-based development for priority sectors
- vi. Skill Development and Training Program
- vii. Logistics and Warehousing enhancement
- viii. Export Facilitation through dedicated District Export Facilitation Cell in collaboration with bodies such as APEDA, DGFT among others
- ix. Digitization and Transparency of processes, documents, application status, along with online public dashboard for approvals

- x. Financial and Credit Support Mechanisms in coordination with banks and NBFCs, and promotion of Central/state schemes

7.6 Regional and international trade promotion plan

In order to fully realize its export potential, exporters in Kabirdham district can adopt a strategic and targeted approach to trade promotion. This may involve conducting thorough market research, upgrading infrastructure, and investing in capacity building initiatives. In addition to these measures, improving market access, staying informed about industry trends, acquiring technological expertise, and enhancing relevant skills are crucial. Participation in trade-related events and exhibitions can also play a vital role in expanding business networks and exploring new opportunities.

9. Challenges and Recommendation

Kabirdham district possesses immense potential to emerge as a dynamic hub for agro-processing, sugarcane-based industries, and mineral-linked exports. With its fertile agricultural land, thriving sugarcane cultivation, and reserves of minerals like iron ore and limestone, the district is uniquely positioned for inclusive and sustainable economic growth. However, to fully harness this potential, several developmental challenges must be addressed strategically.

Improving last-mile road connectivity from rural production zones to key transit routes like National Highway can enhance farm-to-factory and farm-to-market linkages. Kabirdham's agro-horticulture sector—featuring crops like sugarcane, banana, mango, papaya, and vegetables—will benefit significantly from the establishment of integrated cold chains, modern packhouses, and agro-logistics hubs. To raise the district's export-readiness, structured training on certifications like FSSAI, HACCP, and GlobalG.A.P. should be provided to Farmer Producer Organizations (FPOs), SHGs, and rural entrepreneurs.

Kabirdham's ecosystem of tribal and rural micro-enterprises, especially in sugarcane jaggery, herbal products, and forest produce, can be scaled through value addition, branding, and digital marketing under initiatives like "Kawardha Naturals" or "Kabirdham Fresh". Leveraging platforms such as ONDC, Flipkart Samarth, and Amazon Global Store, along with quarterly buyer-seller meets through a District Export Facilitation Cell, will help Kabirdham's products gain national and international visibility. Technical collaborations with institutions like NIFTEM, IGKV Raipur, and CFTRI Mysuru can further support innovation in food processing and quality compliance.

Simultaneously, the responsible development of mineral resources—including iron ore and limestone—can catalyze downstream industries like cement, steel, and construction material manufacturing. Promoting GI-tagging for Kabirdham's signature products, such as organic jaggery or unique sugarcane derivatives, will strengthen its brand identity in export markets. The State Single Window Clearance System can be effectively utilized to fast-track land allotment, electricity connections, pollution control approvals, and export-related registrations.

To accelerate modernization, the state should enable capital subsidies, soft loans, and a streamlined reimbursement mechanism for industrial incentives. With focused infrastructure investments, skill development, and multi-stakeholder collaboration, Kabirdham is well-positioned to evolve into a model district for inclusive, sustainable, and export-led development.



General Manager
Distt. Trade & Industrial Centre
Kabirdham (C.C.)



Collector
Distt- Kabirdham