



Chhattisgarh

Powered
to **Protect**

Location & Connectivity

- ③ 90–120 mins flights from major cities
- ③ Vizag port at 500 kms from Raipur
- ③ Robust rail (2,593 kms) & road (NH 3,620 kms) network
- ③ Multi Modal Logistics Park, Nava Raipur
- ③ Three new expressways under construction





Robust Economy

- ③ 11.6% economic growth
- ③ GSDP of INR 6.31 lakh Cr, 1.7% contribution to India's GDP
- ③ Industry contribution to GSDP – 46.6% (India – 28%)
- ③ 25X growth in State GDP since State's formation

Mineral Resources



LEADER IN MINING INITIATIVES

- 1st to auction Lithium block
- 1st to auction non-coal mining lease
- 1st to online auction Gold Mines
- Awarded for mining ERP implementation

MAJOR MINERAL PRODUCTION

- 1st in Dolomite
- 2nd in Coal and Iron ore
- 11% of India's Limestone
- 4.3% of India's bauxite
- 100% of India's tin concentrate

LEADING STATE IN FIXED GOOD PRODUCTION

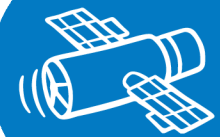
- 25% of Iron & Steel
- 11% of Cement
- 15% of Aluminium

Surplus Power

- ④ 26,424 MW total installed capacity
- ④ Zero power cut
- ④ Supplies electricity to other States
- ④ HT Electricity tariff starting at Rs. 6.65 per unit



Industrial Infrastructure



SPACE MANUFACTURING CLUSTER

Proposed to be developed in Rajnandgaon, spread across 50 acres



ELECTRONICS MANUFACTURING CLUSTER

Established in Nava Raipur and Proposed in Rajnandgaon



NEW MIXED USE INDUSTRIAL AREAS

Kesda (Balodabazar), Parsia (Mungeli), Selar (Bilaspur), Nianar (Bastar)



90+ INDUSTRIAL AREA

Well developed with internal roads, street lighting, water and power supply

Talent Pool

- ⑤ 50,000+ Graduates each year
- ⑤ Premiere institutes – IIT, IIM, NIT, AIIMS, IIIT
- ⑤ Polytechnics – 37 Government & 16 private
- ⑤ Industrial Training Institutes (ITIs) – 197
Government & 113 private



NAVA RAIPUR SMART CITY

India's 1st Greenfield Smart City of 21st Century

- Spread across 237 sq. km.
- World class amenities
- Bike sharing and Rapid Bus Transit System for the public transport
- SCADA (Supervisory Control & Data Acquisition) compliant power distribution & water Supply
- Key Projects – EMC, Textiles Park, Pharma Park, Ready Made Garment Park, IT Investment Region, Multi Modal Logistics Park, Central Business District

Ease of Doing Business

- ⑤ 'Top Achiever' in 4 Business Centric Reform Areas
- ⑤ OneClick Single Window System
- ⑤ Chhattisgarh Jan Vishwas (Amendment of Provisions) Act, 2025



Key Reforms

- ④ 24x7 operations and night shift for women
- ④ Auto mutation of land records
- ④ Efficient land utilization
- ④ Housing for industrial workers within industrial zones
- ④ Simplified land diversion



Chhattisgarh Industrial Development Policy 2024-30

Features

- ③ Defence categorized as thrust sector
- ③ Special package for investment of 50+ cr. in P&M
- ③ 5% additional incentives for first five Anchor Units
(Rs. 200+ cr. investment)
- ③ Incentives over and above PLI scheme
- ③ Customized package for Rs. 1,000+ Cr. or 1,000+ jobs



Chhattisgarh Industrial Development Policy 2024-30

Incentives for Defence Sector

- ③ 35% FCI Subsidy- Employment booster – 1.1x to 1.5x
- ③ 50% Interest Subsidy – 5 years
- ③ 20% Salary Reimbursement – 5 years
- ③ Training cost reimbursement – 1 month's wage
- ③ EPF reimbursement – 5 years
- ③ R&D subsidy – 20% up to Rs. 3 crores
- ③ Centre of Excellence – 50% capital subsidy

For investment above 50 cr. in plant and machinery



SAMPLE CALCULATIONS

FCI: INR 25 Crores

Total FCI	Rs. 25 Crores (75 employment)
Plant and Machinery Investment	Rs. 20 Crores
Land area assumed	1 acres
Total incentives	Rs. 15.18 Crores (61% of FCI)

Sr	Incentives	Description	Amount (Rs. Cr)
1	Fixed capital investment subsidy	40% of FCI, disbursed in 5 equal yearly instalments, max 7.5 cr	7.5
2	Interest subsidy	50% for 7 years, up to Rs. 45 lakhs	2.51
3	Electricity duty exemption	100% for 8 years	0.27
4	Land related incentives	100% exemption on stamp duty and 50% exemption on land diversion up to 15 acres land	0.14
5	EPF reimbursement	75% reimbursement for 5 years up to 2% of FCI per year	0.61
6	Employment generation assistance	20% of salary for 5 years (up to 7 years) for employees earning less than Rs. 50,000 per month	1.35
7	Divyang, Retired Agniveer, surrendered naxalite employment subsidy	40% of net Salary up to Rs. 5 lakh per year for 5 years	0.25
8	Transport subsidy for export	50% of cost of transport for 5 years, max Rs. 50 lakh per year (considering Rs. 20 lakhs per year)	1
9	Training subsidy	One month's wage up to Rs. 15,000 per employee, max limit 100% of FCI	0.11
10	Other subsidies	Incentives on project report, quality certification, technical patent, technology purchase, water and energy audit fee, zero waste incentive, others	1.44
TOTAL (Rs. Cr)			15.18

Note: Subsidies as per IDP 2024-30. Calculations are based on assumptions; final incentives may vary. Electricity consumption assumed – 50,000 units per month, at 8% electricity duty.

SAMPLE CALCULATIONS

FCI: INR 100 Crores

Total FCI	Rs. 100 Crores (150 employment)
Plant and Machinery Investment	Rs. 70 Crores
Land area assumed	3 acres
Total Incentives	Rs. 64.61 Crores (65% of FCI)

Sr	Incentives	Description	Amount (Rs. Cr)
1	Fixed capital investment subsidy	38.5% of FCI, disbursed in 6 equal yearly instalments, max Rs. 66 crore (including multiplier of 1.1 on 150 permanent employment generation)	38.5
2	Interest Subsidy	Interest calculated at 6% rate or 50% of actual payment whichever is lower, annual limit of Rs. 20 crore per annum for 5 years	9.62
3	Electricity duty exemption	100% exemption for 12 years	4.03
4	Land related incentives	100% stamp duty exemption, 50% of registration charges reimbursement, 50% land diversion exemption up to 50 acres land	0.46
5	New Electricity Connection	50% of cost (except security deposit)	0.05
6	EPF reimbursement	75% reimbursement for 5 years up to 2% of FCI per year	1.62
7	Employment generation subsidy	20% of wages for 5 years for employees earning less than Rs. 50,000	3.6
8	Training subsidy	One month's wage up to Rs. 15,000 per employee, max limit 100% of FCI	0.23
9	Establishment of R&D Center	20% on plant & machinery and equipment, max Rs. 3 crore	3
10	Export Certification	50% up to Rs. 15 lakhs per product for 10 products	1.5
11	Other incentives	Subsidy for transport related to export, project report, quality certification, technical patent, technology purchase, water and energy audit fee (capped at 2% of FCI)	2
TOTAL (Rs. Cr)			64.61

Note: Subsidies as per IDP 2024-30. Calculations are based on assumptions; final incentives may vary. Electricity consumption assumed – 2,50,000 units per month, at 8% electricity duty.

SAMPLE CALCULATIONS

FCI: INR 600 Crores

Total FCI	Rs. 600 Crores (250 employment)
Plant and Machinery Investment	Rs. 520 Crores
Land area assumed	25 acre
Total Incentives	Rs. 377.90 Crores (63% of FCI)

Sr	Incentives	Description	Amount (Rs. Cr)
1	Fixed capital investment subsidy	42% of FCI, disbursed in 6 equal yearly instalments, max 360 crore (including employment multiplier of 1.2 on 210 permanent employment generation)	252
2	Interest Subsidy	50% of interest paid or interest calculated at 6% rate, whichever is lower, up to Rs. 20 crore per annum for 5 years	84.46
3	Electricity duty exemption	100% for 12 years	16.13
4	Land related incentives	100% exemption on stamp duty, Reimbursement of 50% of registration charges, 50% exemption on land diversion up to 50 acres	1.14
5	New Electricity Connection	50% of cost (except security deposit)	0.05
6	EPF reimbursement	75% reimbursement for 5 years up to 2% of FCI per year (calculated on average salary of Rs. 15,000 per month)	2.27
7	Employment generation subsidy	20% of wages for 5 years for employees earning less than Rs. 50,000	5.04
8	Training subsidy	One month's wage up to Rs. 15,000 per employee	0.32
9	Establishment of R&D Centre	20% on plant & machinery and equipment, max 3 crore	3
10	Export Certification	50% up to Rs. 15 lakhs per product for 10 products	1.5
11	Other incentives	Subsidy on transport related to export, project report, quality certification, technical patent, technology purchase, water and energy audit fee	6
TOTAL (Rs. Cr)			377.9

Note: Subsidies as per IDP 2024-30. Calculations are based on assumptions; final incentives may vary. Electricity consumption assumed – 20 lakh units per month, at 8% electricity duty.

THANK YOU



Chhattisgarh
Business Made Easy



Scan to know more

Department of Commerce and Industries
Government of Chhattisgarh
Email: secy-commind.cg@gov.in | www.invest.cg.gov.in

      Invest Chhattisgarh